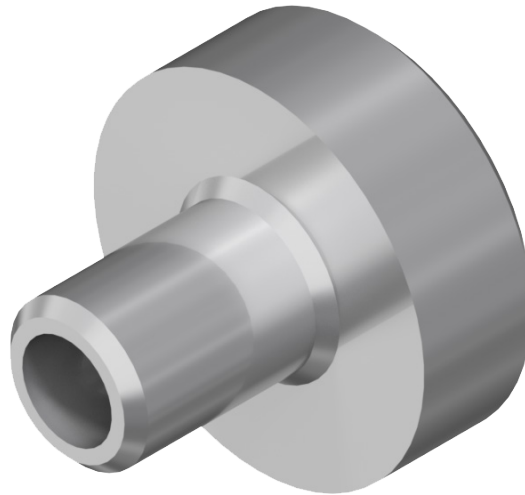


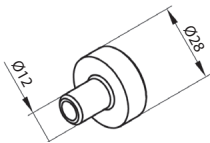
We would like to inform you that since December 01, 2019, TSP division wall pin have been introduced to SKB Styroterm system.

Changes have also been made to SKB Styroterm documentation for the production. New configurations have been added:

- single roller shutter with **PAC plate**,
- set of roller shutters with **PBW SKB** compound internal end caps and **PAC plate**,
- Set of roller shutters with **SP/B** division walls and **TSP** pins which allows for greater maximum width of the SKB box



TSP



Division wall pin

Packing: 20 pcs.

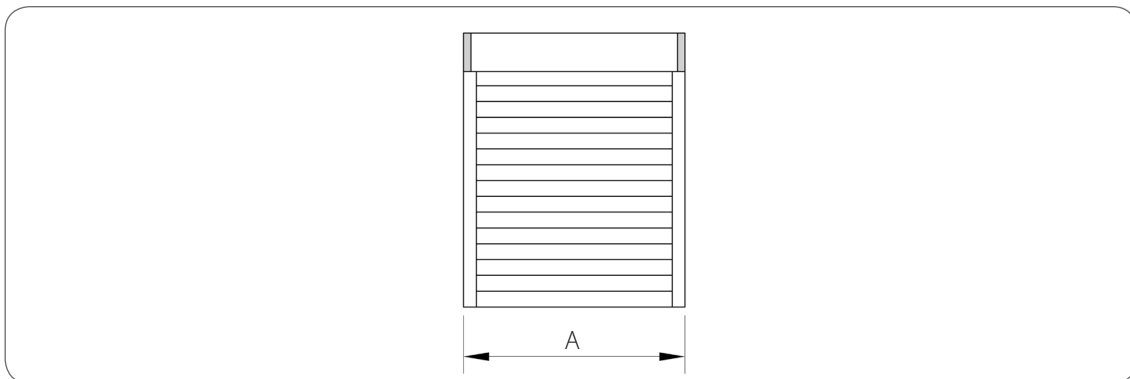
TSP

used with: SP, SPM, SPM/W, SP/B

Systems SKB / SKT

SKB box maximum width

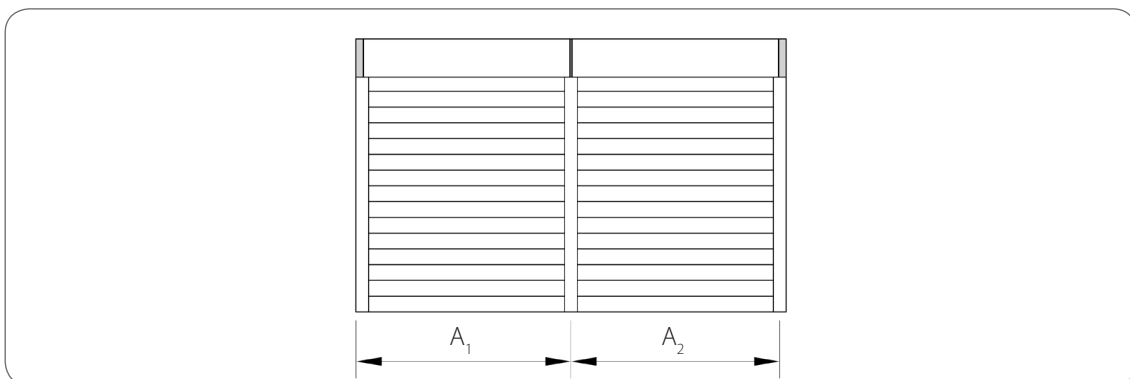
a) Single roller shutter



System	Type	Width
SKB/RI SKB/RA	with WSD reinforcement and PAC	A ≤ 3300 [mm]
	with WSD bottom steel reinforcement	A ≤ 2500 [mm]
	without WSD reinforcement	A ≤ 2000 [mm]

NEW

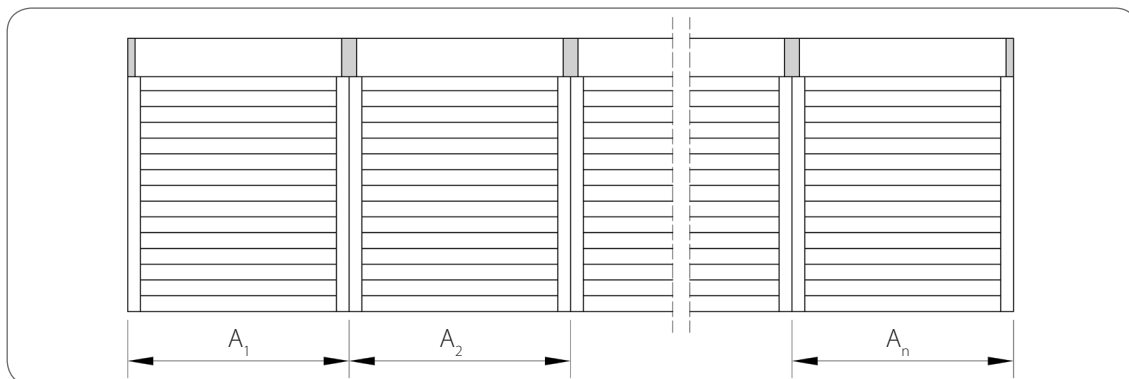
b) Set of roller shutters with division walls



System	Type	Width
SKB/RI SKB/RA	with WSD reinforcement and TSP	A₁, A₂ ≤ 2500 [mm]
		A₁+A₂ ≤ 5000 [mm]
	with WSD bottom steel reinforcement	A₁, A₂ ≤ 2500 [mm]
		A₁+A₂ ≤ 3200 [mm]
SKB/RI + MKT SKB/RA + MKT	with WSD reinforcement and TSP	A₁, A₂ ≤ 2000 [mm]
		A₁+A₂ ≤ 4000 [mm]
	with WSD bottom steel reinforcement	A₁, A₂ ≤ 2000 [mm]
		A₁+A₂ ≤ 3200 [mm]

NEW
NEW

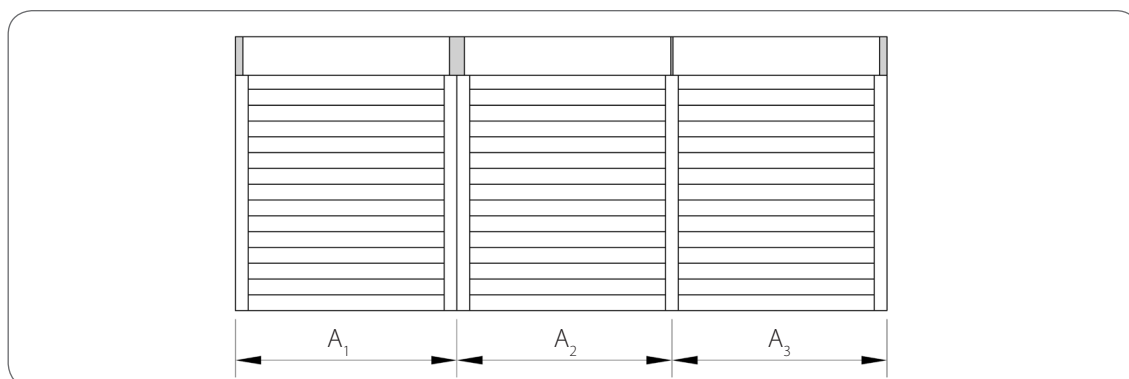
c) Set of roller shutters with internal compound end caps



System	Type	Width
SKB/RI SKB/RA	with WSD reinforcement and PAC	$A_1, A_2, \dots, A_n \leq 3300$ [mm]
		$A_1 + A_2 + \dots + A_n \leq 6000$ [mm]
	with WSD bottom steel reinforcement	$A_1, A_2, \dots, A_n \leq 2500$ [mm]
		$A_1 + A_2 + \dots + A_n \leq 6000$ [mm]
without WSD reinforcement	$A_1, A_2, \dots, A_n \leq 2000$ [mm]	
	$A_1 + A_2 + \dots + A_n \leq 6000$ [mm]	

NEW

d) Set of roller shutters with compound internal end caps and division wall



System	Type	Width
SKB/RI SKB/RA	with WSD reinforcement, TSP and PAC	$A_1 \leq 3300$ [mm]
		$A_2, A_3 \leq 2500$ [mm]
		$A_2 + A_3 \leq 5000$ [mm]
	$A_1 + A_2 + A_3 \leq 6000$ [mm]	
with WSD bottom steel reinforcement	$A_1, A_2, A_3 \leq 2500$ [mm]	
	$A_2 + A_3 \leq 3200$ [mm]	
	$A_1 + A_2 + A_3 \leq 5700$ [mm]	
SKB/RI + MKT SKB/RA + MKT	with WSD bottom steel reinforcement i TSP	$A_1, A_2, A_3 \leq 2000$ [mm]
		$A_2 + A_3 \leq 4000$ [mm]
		$A_1 + A_2 + A_3 \leq 6000$ [mm]
	with WSD bottom steel reinforcement	$A_1, A_2, A_3 \leq 2000$ [mm]
$A_2 + A_3 \leq 3200$ [mm]		
$A_1 + A_2 + A_3 \leq 5200$ [mm]		

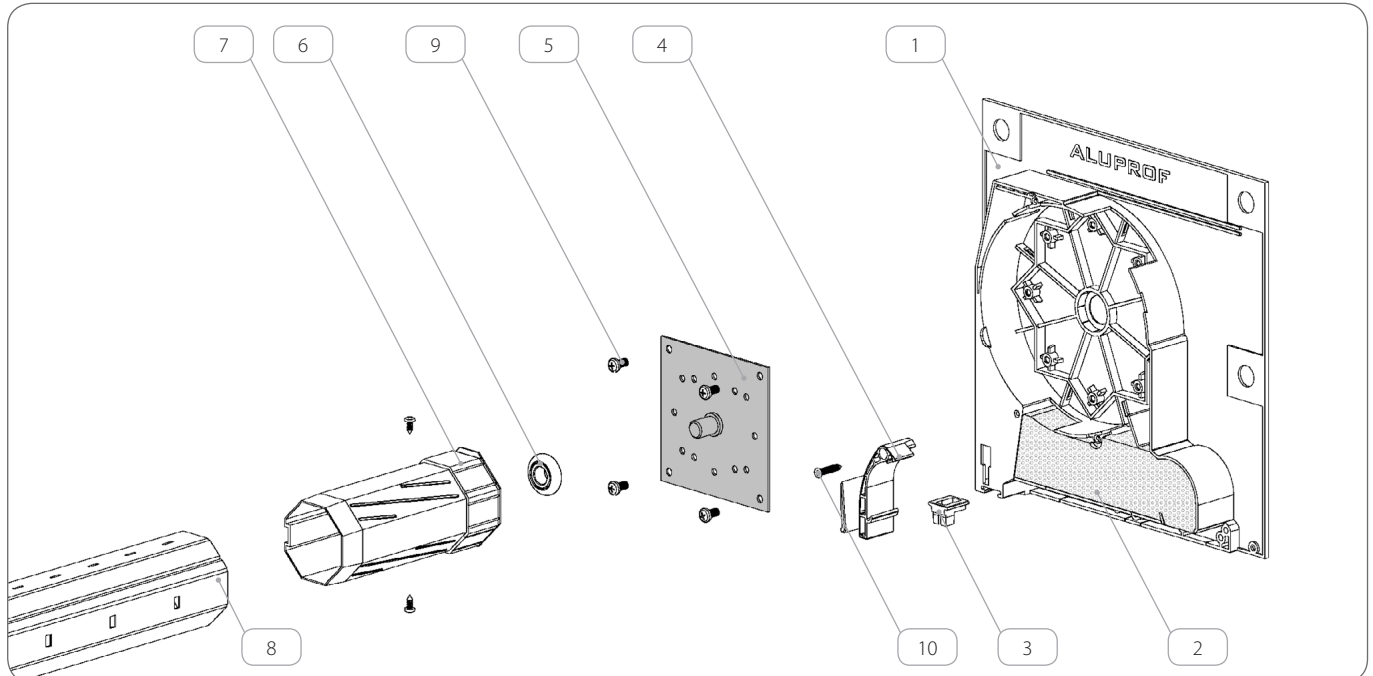
NEW

NEW

Cutting specification and list of components for a single roller shutter with PAC plate

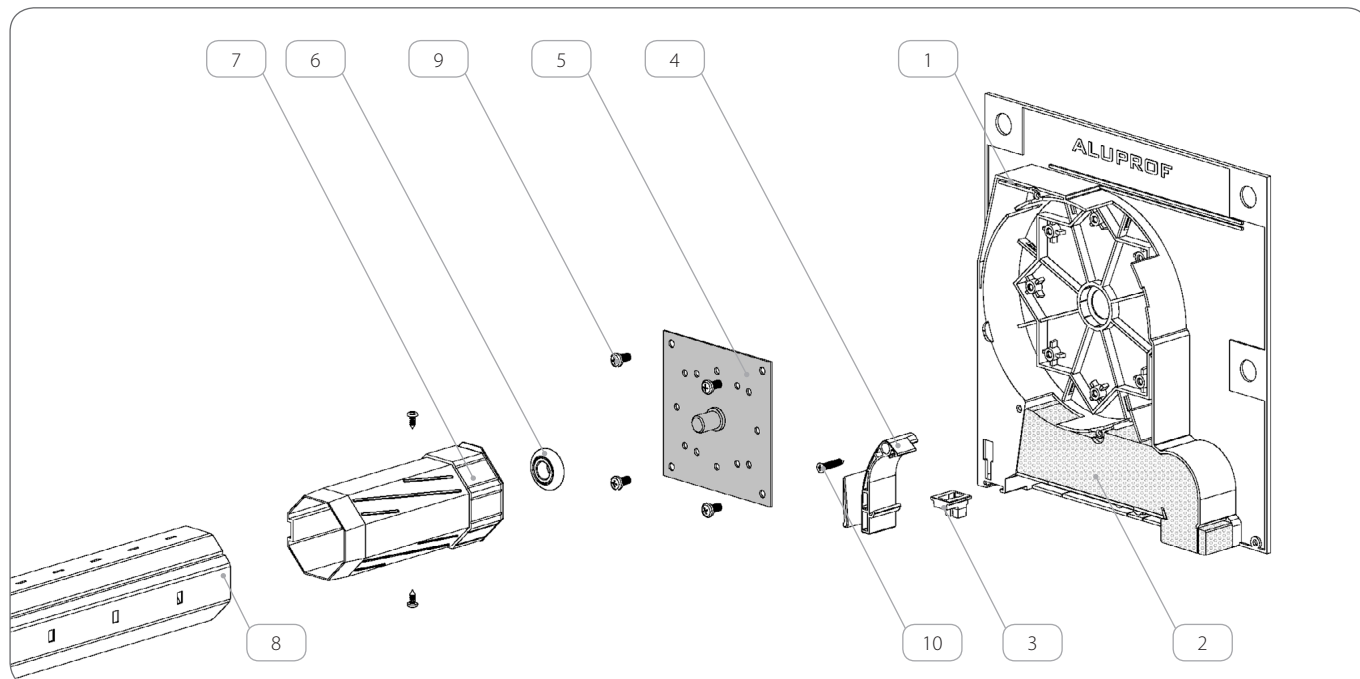
 PAC plate must be mounted to end cap without drive.

System SKB/RI



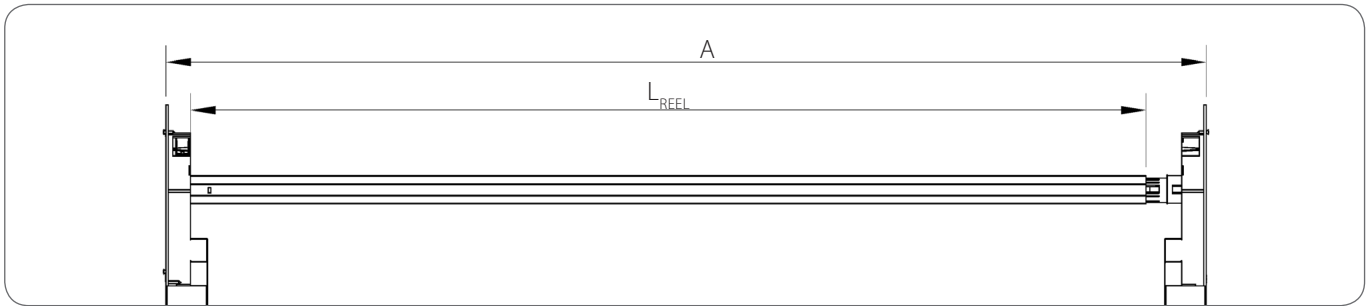
	Name of the component	Catalogue code		Quantity
		SKB/260	SKB/300	
1.	End cap for shutter box SKB	PBSKB/260	PBSKB/300	1 [pair]
2.	Thermal insulation for end cap	OCPSKB/260	OCPSKB/300	1 [pair]
3.	End cap pin	STR/B		2 [pcs.]
4.	Entry guide	SLMI/B, SLMA/B		1 [pair]
5.	Plate for gear mechanism ACEC	PAC		1 [pcs.]
6.	Ball bearing Ø28 mm	LO28		1 [pcs.]
7.	Cap Ø60	OBS60		1 [pcs.]
8.	Octagonal galvanized steel reel	SW6006, SW6010		1 [pcs.]
9.	Galvanized screw 5,0 x 10 mm	WKR/Zn/W/5,0x10		4 [pcs.]
10.	Galvanized screw 4,2 x 25 mm	WKR/Zn/S/4,2x25		1 [pcs.]

System SKB/RA

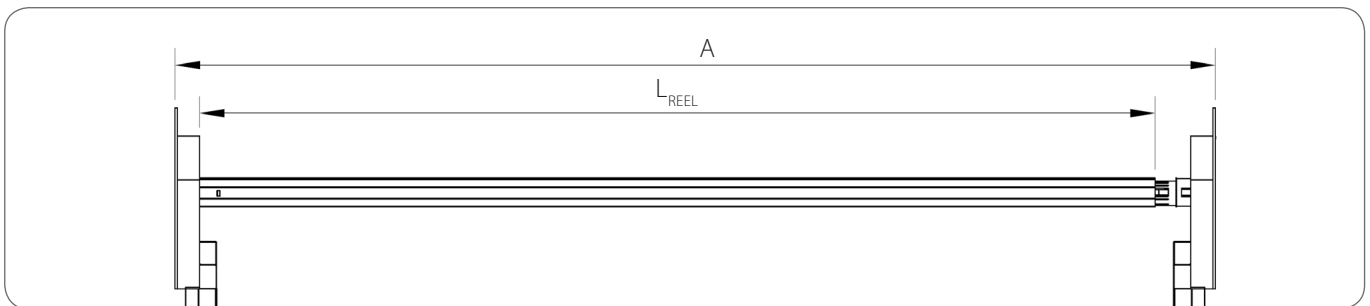


	Name of the component	Catalogue code		Quantity
		SKB/260	SKB/300	
1.	End cap for shutter box SKB	PBSKB/260	PBSKB/300	1 [pair]
2.	Thermal insulation for end cap	OCPBSKB/260	OCPBSKB/300	1 [pair]
3.	End cap pin	STR/B		2 [pcs.]
4.	Entry guide	SLMI/B, SLMA/B		1 [pair]
5.	Plate for gear mechanism ACEC	PAC		1 [pcs.]
6.	Ball bearing Ø28 mm	LO28		1 [pcs.]
7.	Cap Ø60	OBS60		1 [pcs.]
8.	Octagonal galvanized steel reel	SW6006, SW6010		1 [pcs.]
9.	Galvanized screw 5,0 x 10 mm	WKR/Zn/W/5,0x10		4 [pcs.]
10.	Galvanized screw 4,2 x 25 mm	WKR/Zn/S/4,2x25		1 [pcs.]

System SKB/RI



System SKB/RA



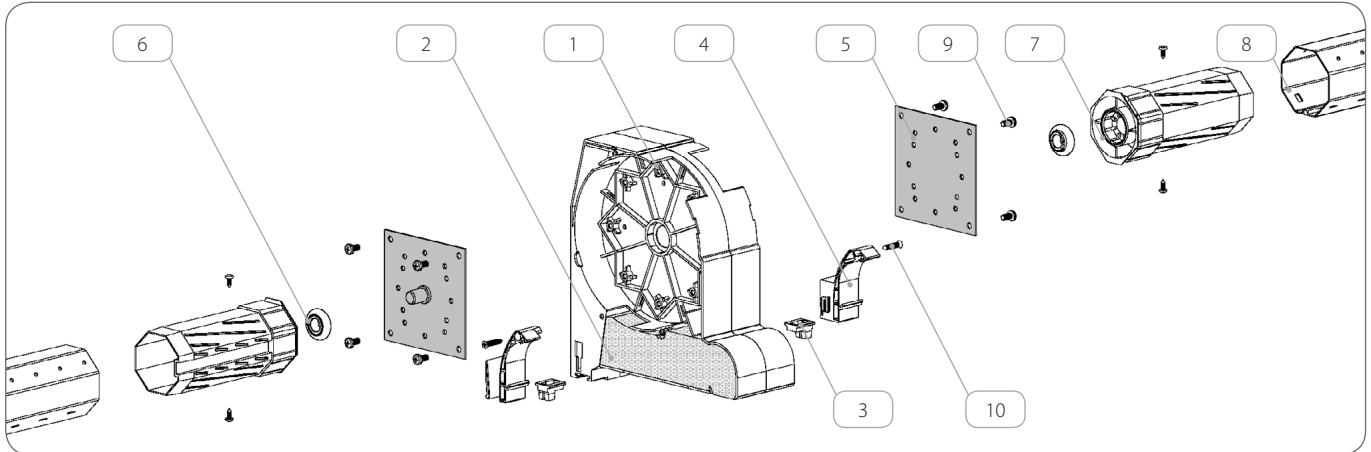
	Drive	steel reel length SW60
1.	Pulley KN	A - 105 [mm]
2.	Gear mechanism ACEC	A - 110 [mm]
3.	Gear mechanism MK	A - 110 [mm]
4.	Motor: YYGL45S	A - 100 [mm]
5.	Motor: YYGL45M	A - 110 [mm]
6.	Motor: DM45S, DM45EV/Y, DM45R, DM45BD, DM45SD	A - 100 [mm]
7.	Motor: DM45M, DM45RM	A - 107 [mm]
8.	Motor: OXIMO_M50_S_AUTO_RTS, OXIMO_M50_WT, OXIMO_M50_RTS, ILMO_M50_S_WT, ILMO_M50_WT, OXIMO_M50_S_AUTO_io, OXIMO_M50_io	A - 105 [mm]
9.	Motor: RDO_M50_CSI	A - 110 [mm]
10.	Motor: T5, T5_JOB, T5_Ehz, T5_AUTO, T5_AUTO_Short_Hz, T5_AUTO_Short	A - 100 [mm]
11.	Motor: DMI5, DMI5_HZ	A - 110 [mm]

Cutting specification and list of components for a set of the roller shutters with PBW SKB compound internal end caps and PAC plate

! PAC plate must be mounted to side without drive.

! Elements number specified for case with one **PBW SKB** compound internal end caps.

System SKB/RI



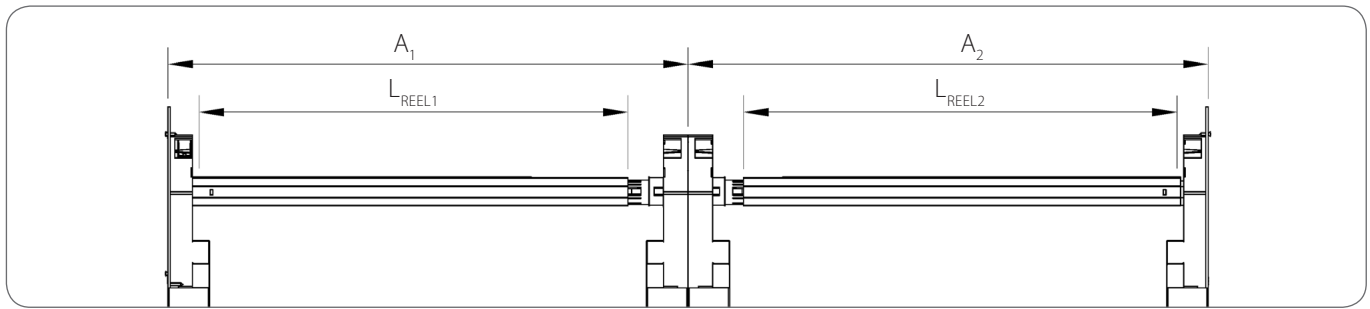
	Name of the component	Catalogue code		Quantity
		SKB/260	SKB/300	
1.	Compound internal end caps for shutter box SKB	PBWSKB/260	PBWSKB/300	1 [pcs.]
2.	Thermal insulation for end cap	OCPBSKB/260	OCPBSKB/300	1 [pair]
3.	End cap pin	STR/B		2 [pcs.]
4.	Entry guide	SLMI/B, SLMA/B		1 [pair]
5.	Plate for gear mechanism ACEC	PAC		2 [pcs.]
6.	Ball bearing Ø28 mm	LO28		2 [pcs.]
7.	Cap Ø60	OBS60		2 [pcs.]
8.	Octagonal galvanized steel reel	SW6006, SW6010		2 [pcs.]
9.	Galvanized screw 5,0 x 10 mm	WKR/Zn/W/5,0x10		8 [pcs.]
10.	Galvanized screw 4,2 x 25 mm	WKR/Zn/S/4,2x25		2 [pcs.]

System SKB/RA

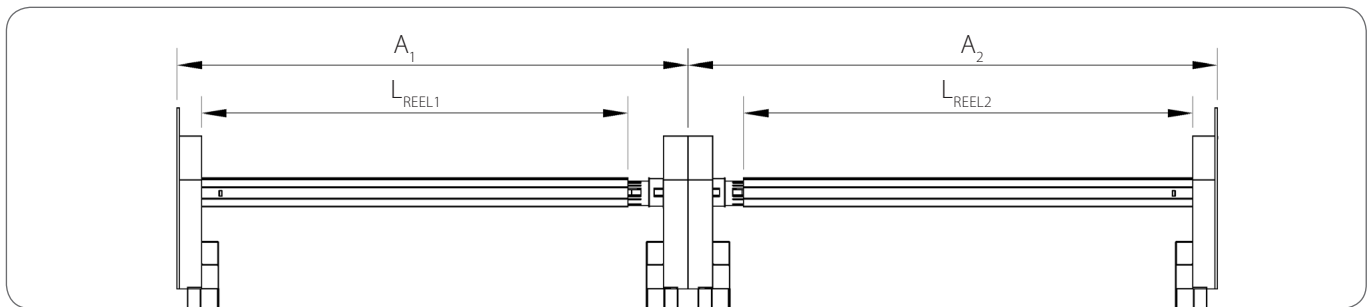


	Name of the component	Catalogue code		Quantity
		SKB/260	SKB/300	
1.	Compound internal end caps for shutter box SKB	PBWSKB/260	PBWSKB/300	1 [pcs.]
2.	Thermal insulation for end cap	OCBPSKB/260	OCBPSKB/300	1 [pair]
3.	End cap pin	STR/B		2 [pcs.]
4.	Entry guide	SLMI/B, SLMA/B		1 [pair]
5.	Plate for gear mechanism ACEC	PAC		2 [pcs.]
6.	Ball bearing Ø28 mm	LO28		2 [pcs.]
7.	Cap Ø60	OB560		2 [pcs.]
8.	Octagonal galvanized steel reel	SW6006, SW6010		2 [pcs.]
9.	Galvanized screw 5,0 x 10 mm	WKR/Zn/W/5,0x10		8 [pcs.]
10.	Galvanized screw 4,2 x 25 mm	WKR/Zn/S/4,2x25		2 [pcs.]

System SKB/RI



System SKB/RA

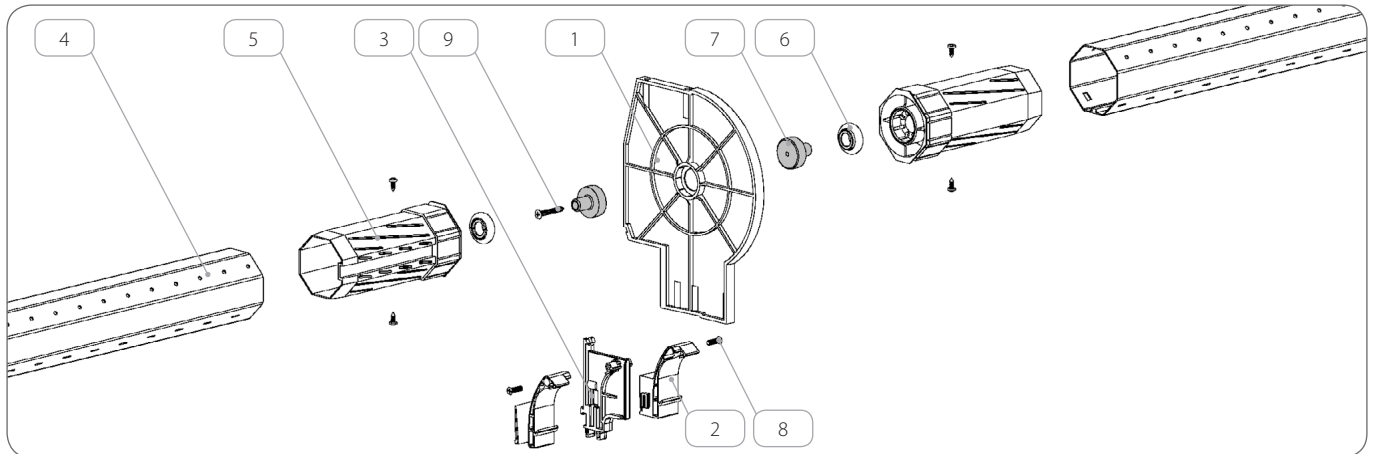


	Drive	steel reel length SW60
1.	Pulley KN	A ₁ - 105 [mm] A ₂ - 105 [mm]
2.	Gear mechanism ACEC	A ₁ - 110 [mm] A ₂ - 110 [mm]
3.	Gear mechanism MK	A ₁ - 110 [mm] A ₂ - 110 [mm]
4.	Motor YYGL45S	A ₁ - 100 [mm] A ₂ - 100 [mm]
5.	Motor YYGL45M	A ₁ - 110 [mm] A ₂ - 110 [mm]
6.	Motor: DM45S, DM45EV/Y, DM45R, DM45BD, DM45SD	A ₁ - 100 [mm] A ₂ - 100 [mm]
7.	Motor: DM45M, DM45RM	A ₁ - 107 [mm] A ₂ - 107 [mm]
8.	Motor: OXIMO_M50_S_AUTO_RTS, OXIMO_M50_WT, OXIMO_M50_RTS, ILMO_M50_S_WT, ILMO_M50_WT, OXIMO_M50_S_AUTO_io, OXIMO_M50_io	A ₁ - 105 [mm] A ₂ - 105 [mm]
9.	Motor: RDO_M50_CSI	A ₁ - 110 [mm] A ₂ - 110 [mm]
10.	Motor: T5, T5_JOB, T5_Ehz, T5_AUTO, T5_AUTO_Short_Hz, T5_AUTO_Short	A ₁ - 100 [mm] A ₂ - 100 [mm]
11.	Motor: DMI5, DMI5_HZ	A ₁ - 110 [mm] A ₂ - 110 [mm]

Cutting specification and list of components for a set of the roller shutters with SP/B division wall and TSP pins

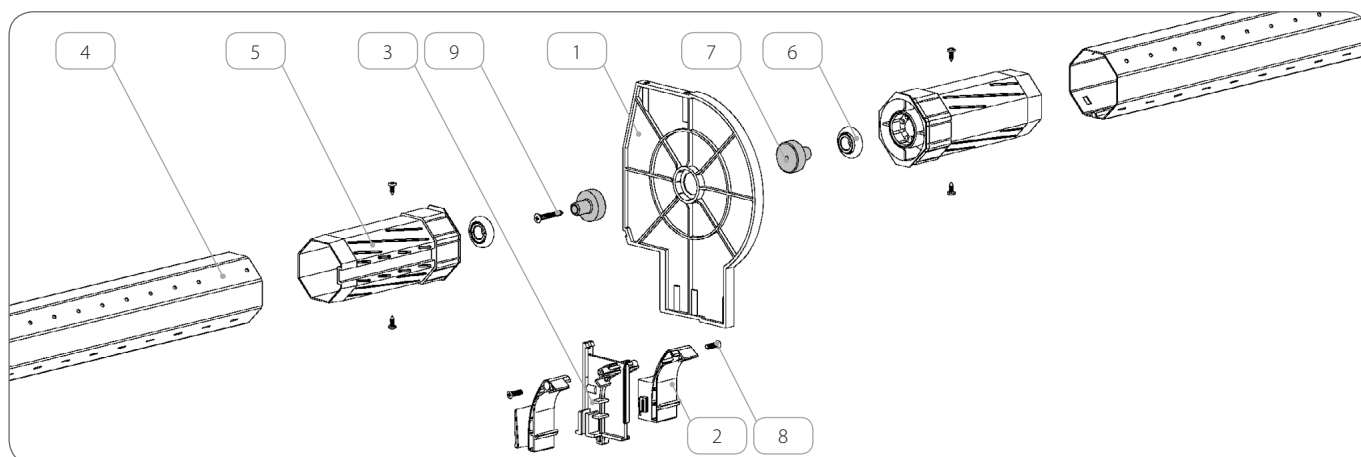
! Elements number specified for case with one **SP/B** division wall.

System SKB/RI



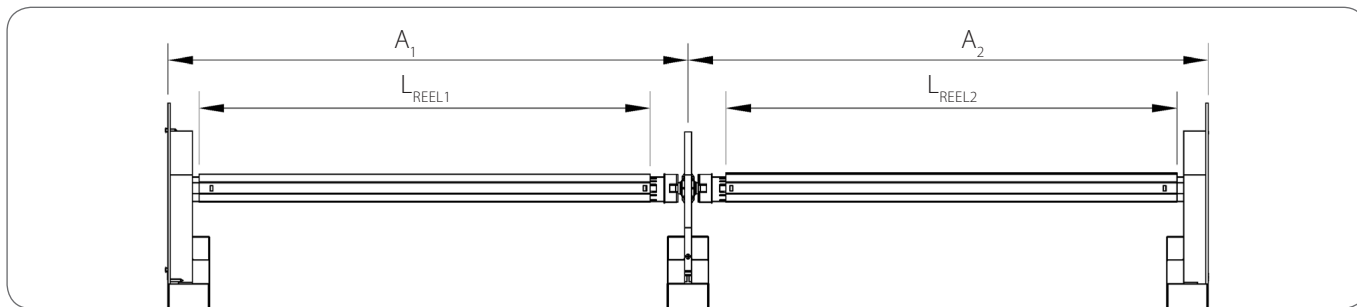
	Name of the component	Catalogue code		Quantity
		SKB/260	SKB/300	
1.	Division wall for shutter box SKB	SP/B/260	SP/B/300	1 [pcs.]
2.	Entry guide	SLMI/B, SLMA/B		1 [pair]
3.	Entry guide adapter	ASRI		1 [pcs.]
4.	Octagonal galvanized steel reel	SW4005, SW4006, SW5006, SW6006, SW6010		2 [pcs.]
5.	Cap			2 [pcs.]
	SW40	OBS40		
	SW50	OBS50		
	SW60	OBS60		
6.	Ball bearing	LO28		2 [pcs.]
7.	Pin for division wall	TSP		2 [pcs.]
8.	Galvanized screw 4,2 x 16 mm	WKR/Zn/S/4,2x16		2 [pcs.]
9.	Galvanized screw 4,2 x 40 mm	WKR/Zn/S/4,2x40		1 [pcs.]

System SKB/RA

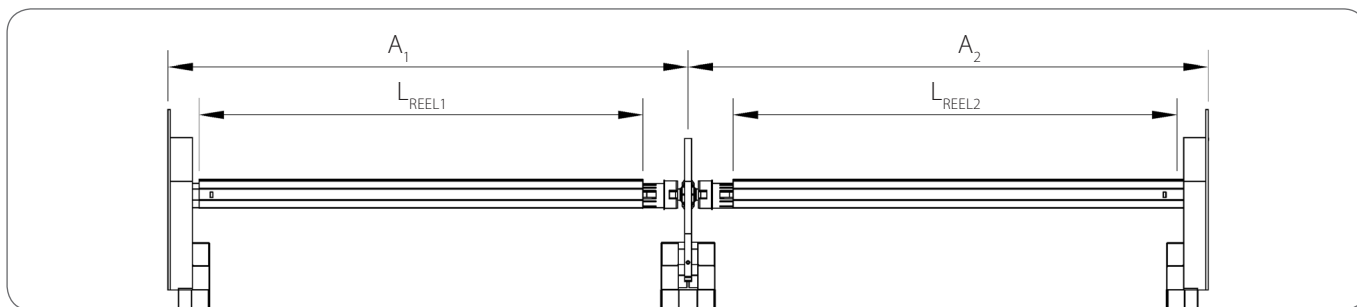


	Name of the component	Catalogue code		Quantity
		SKB/260	SKB/300	
1.	Division wall for shutter box SKB	SP/B/260	SP/B/300	1 [pcs.]
2.	Entry guide	SLMI/B, SLMA/B		1 [pair]
3.	Entry guide adapter	ASRA		1 [pcs.]
4.	Octagonal galvanized steel reel	SW4005, SW4006, SW5006, SW6006, SW6010		2 [pcs.]
5.	Cap			2 [pcs.]
	SW40	OBS40		
	SW50	OBS50		
	SW60	OBS60		
6.	Ball bearing	LO28		2 [pcs.]
7.	Pin for division wall	TSP		2 [pcs.]
8.	Galvanized screw 4,2 x 16 mm	WKR/Zn/S/4,2x16		2 [pcs.]
9.	Galvanized screw 4,2 x 40 mm	WKR/Zn/S/4,2x40		1 [pcs.]

System SKB/RI



System SKB/RA



	Drive	steel reel	steel reel length
1.	Pulley KN	SW4005, SW4006	A ₁ - 70 [mm] A ₂ - 70 [mm]
		SW5006	A ₁ - 110 [mm] A ₂ - 110 [mm]
		SW6006, SW6010	A ₁ - 100 [mm] A ₂ - 100 [mm]
2.	Gear mechanism ACEC	SW4005, SW4006	A ₁ - 80 [mm] A ₂ - 80 [mm]
		SW5006	A ₁ - 120 [mm] A ₂ - 120 [mm]
		SW6006, SW6010	A ₁ - 110 [mm] A ₂ - 110 [mm]
3.	Gear mechanism MK	SW4005, SW4006	A ₁ - 80 [mm] A ₂ - 80 [mm]
		SW5006	A ₁ - 120 [mm] A ₂ - 120 [mm]
		SW6006, SW6010	A ₁ - 110 [mm] A ₂ - 110 [mm]
4.	Motor	SW4005, SW4006	A ₁ - 70 [mm] A ₂ - 70 [mm]
		SW5006	A ₁ - 110 [mm] A ₂ - 110 [mm]
		SW6006, SW6010	A ₁ - 100 [mm] A ₂ - 100 [mm]